

The Problem

There is currently no way for teachers to accurately and efficiently analyze the instructional quality and equity being experienced in their classrooms. Students are being left behind or lost due to lack of engagement or instructional quality.

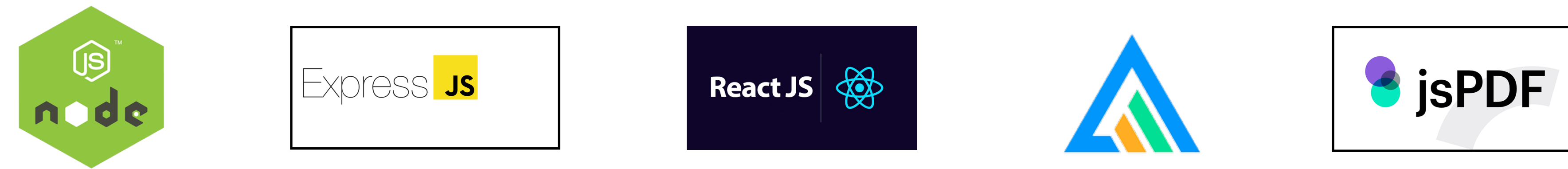
Proposed Solution

Provide a tool to analyze teaching practices and allow teachers to make proper adjustments to ensure growth in student engagement and learning in the classroom.

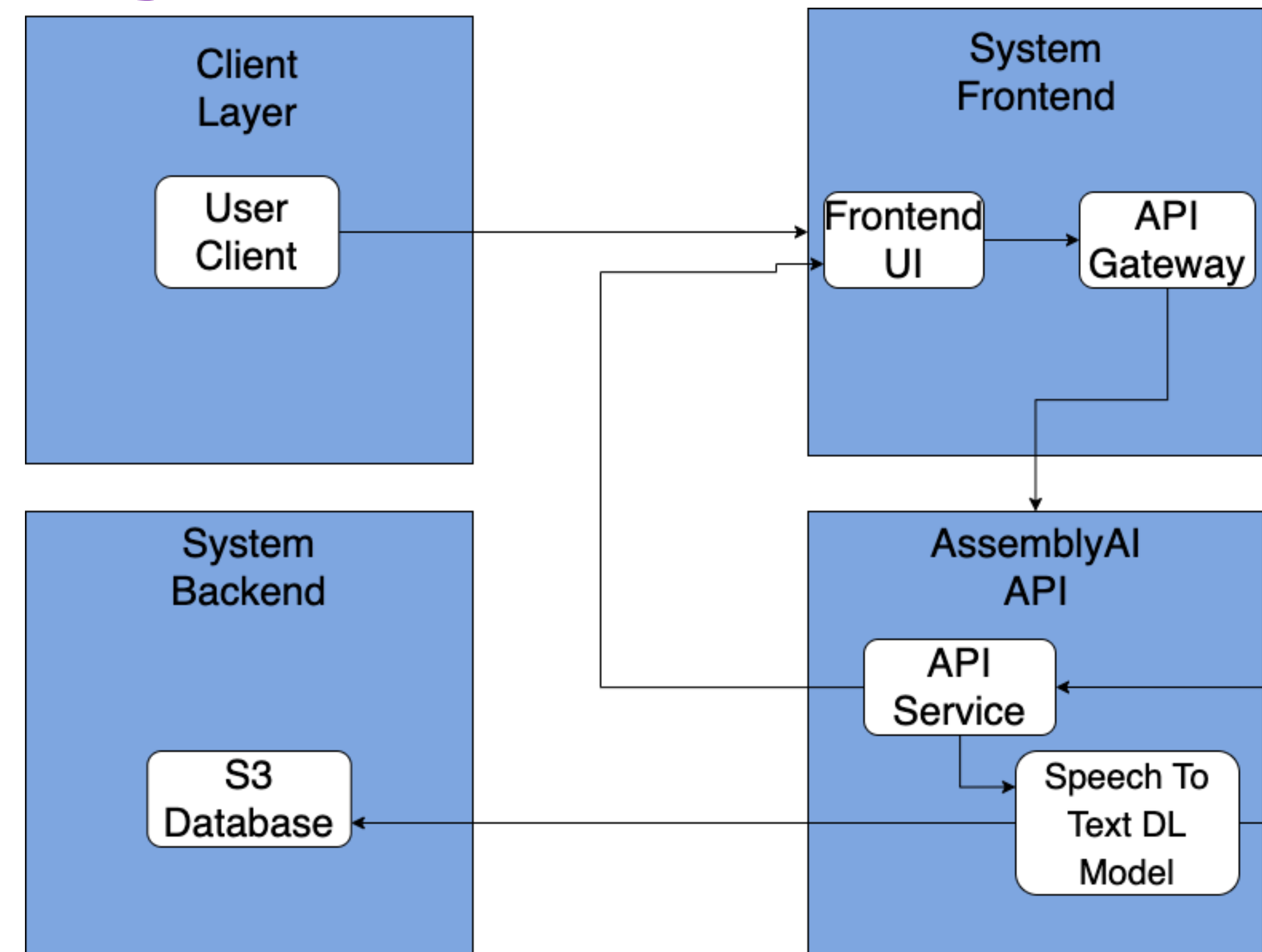
Screenshots

The screenshots show the user interface of the C2AI tool. It includes a login page with fields for email and password, a file upload prompt for audio or video recordings, a transcript view with color-coded text, a question categorization table, data visualization charts (like a pie chart for question category distribution and a timeline for teacher questions), and an account page for user management.

Tech Stack



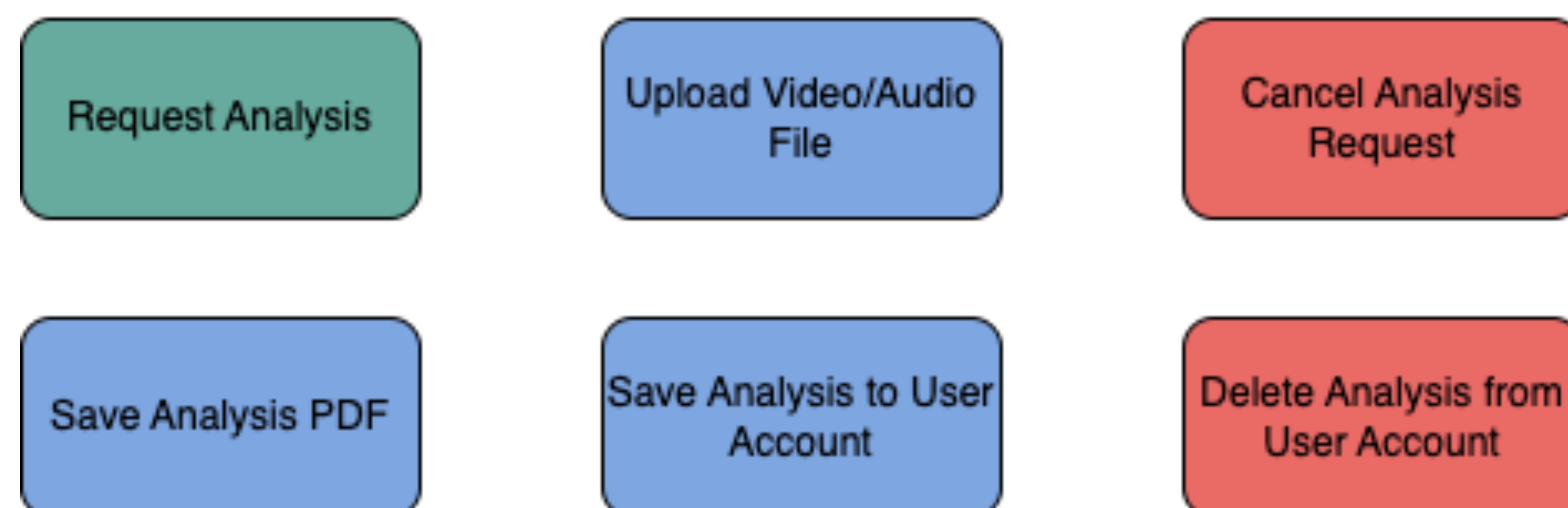
System Architecture



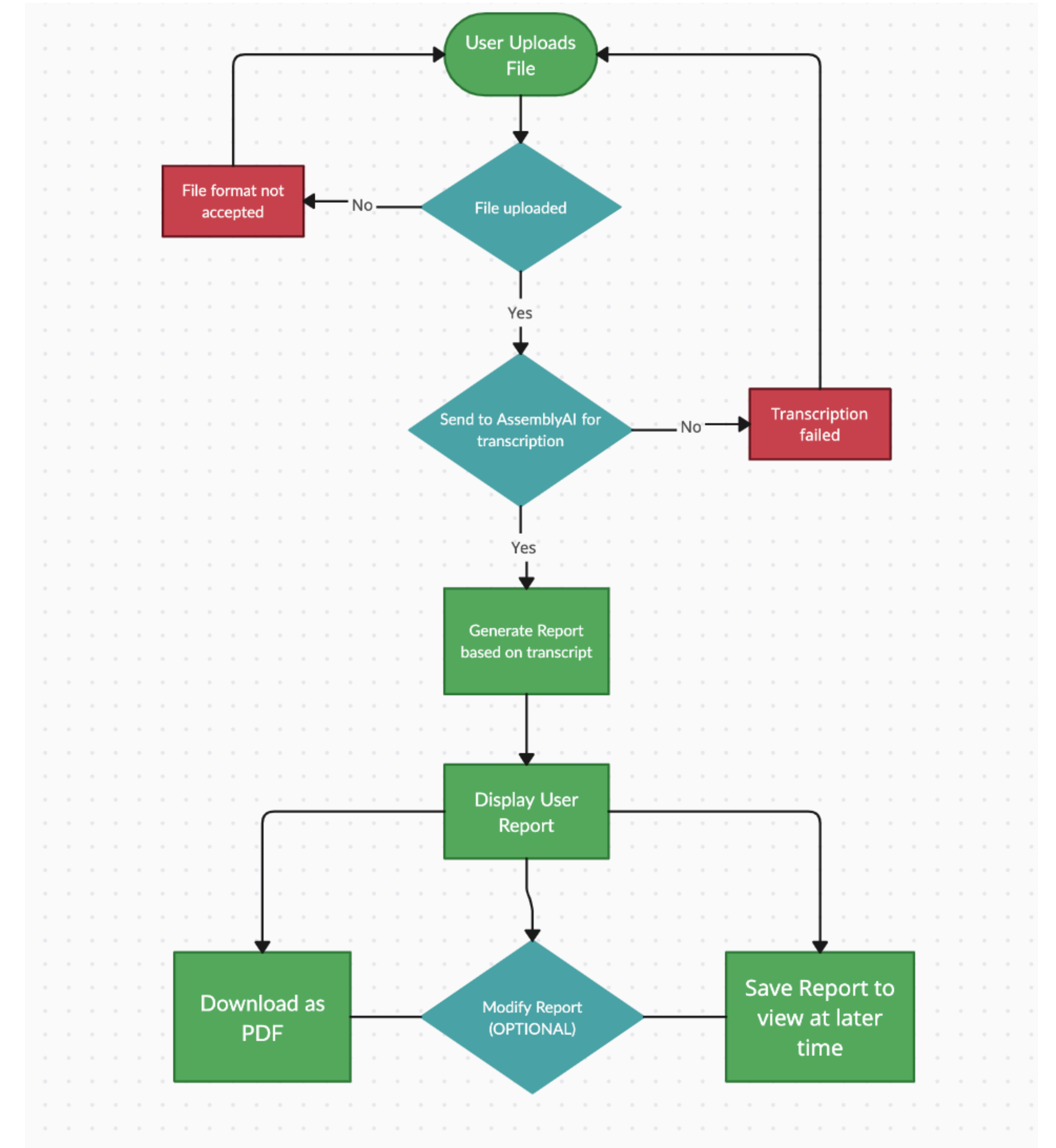
Use Cases



Professor



Workflow Diagram



Features

- User login
- Video/Audio Analysis
- Analysis Report Saving
- Analysis Visualization
- Analysis Editing and Manual Selection
- Dynamic Visualization of Edits
- Account Security and Privacy

Challenges

- Modified Report Saving
- User Experience Management
- Dynamic Visualization
- AWS Hosting and Service Management
- Managing Group Involvement